







- Modern Split Level House
- No Onward Chain
- Double Glazed
- Council Tax Band \*B\*
- Central Location
- Two Bedroom Home
- Gas Central Heating
- Private Garden Area
- Leasehold Property
- £58 PCM Maintenance Charge







**\*\* Video Tour on our YouTube Channel |  
<https://youtu.be/XPYjJfmGRfc> \*\***

**2 BEDROOM TERRACED HOUSE WITH SUNNY PATIO GARDEN**  
 Forming part of this modern development and offered with no upper chain, the opportunity to purchase this delightful split level home in the centre of North Shields is now available.

Internally the property briefly comprises: entrance hall and landing area with stairs down to the bright and airy lounge with French doors opening up to the rear garden, and a kitchen with wall and floor units providing ample storage and an integrated oven and hob. to the first floor there are two double bedrooms and a modern bathroom WC with shower over the bath. Externally there is patio garden to the rear with raised flower beds. Allocated parking space together with visitors parking.

This particular part of North Shields is extremely favourable and offers the buyer a superb lifestyle choice. Public travel links are within close proximity and the area is serviced with the Metro which will have you into the city centre in some twenty minutes. North Shields is an old fishing location where there is still an active working Quayside; a hive of activity with bars and restaurants along with the fishing industry. This also extends to Tynemouth and in particular Front Street; an exciting place to live and to visit with plenty going on.

For more information and to book a viewing please call our Tynemouth branch on 0191 257 2000.

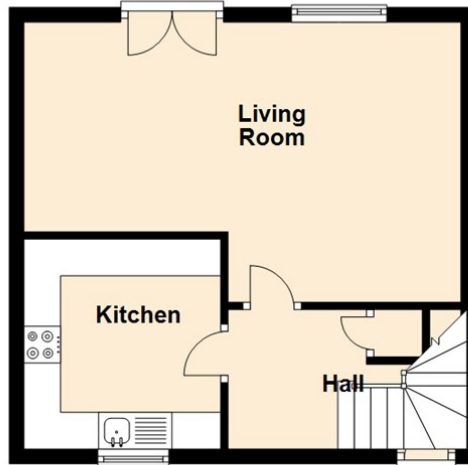
#### Tenure

The agent understands the property to be leasehold. However, this should be confirmed with a licenced legal representative.

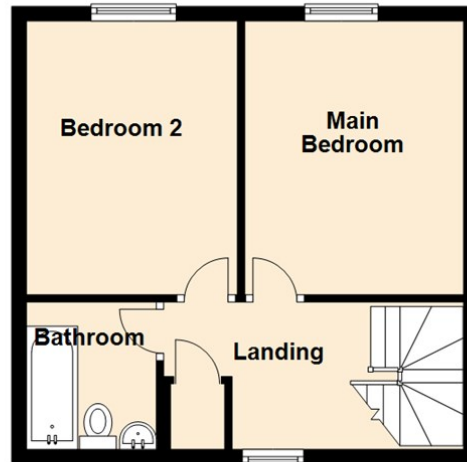
Council Tax band \*B\*



Ground Floor



First Floor

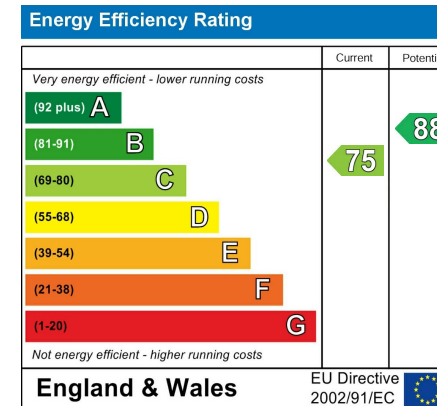


Living Room 12'6" x 19'6" (3.82 x 5.96)

Kitchen 9'4" x 8'9" (2.86 x 2.68)

Main Bedroom 12'9" x 9'9" (3.89 x 2.98)

Bedroom Two 12'9" x 9'5" (3.89 x 2.88)



## The difference between house and home

You may download, store and use the material for your own personal use and research. You may not republish, retransmit, redistribute or otherwise make the material available to any party or make the same available on any website, online service or bulletin board of your own or of any other party or make the same available in hard copy or in any other media without the website owner's express prior written consent. The website owner's copyright must remain on all reproductions of material taken from this website.



[www.janforsterestates.com](http://www.janforsterestates.com)

Gosforth

0191 236 2070

Newcastle

0191 284 4050

High Heaton

0191 270 1122

Tynemouth

0191 257 2000

Low Fell

0191 487 0800

Property Management Centre

0191 236 2680

